

Design D4 Control Valve Assembly

Contents

| | |
|--------------------------------|----|
| Introduction | 1 |
| Scope of Manual | 1 |
| Description | 1 |
| Specifications | 1 |
| Installation | 3 |
| Spring Adjustment | 5 |
| Maintenance | 5 |
| Valve Plug and Seat Ring | 5 |
| Valve Packing | 6 |
| Actuator | 7 |
| Parts Ordering | 10 |
| Repair Kits | 10 |
| Parts List | 10 |

Introduction

Scope of Manual

This instruction manual provides installation, maintenance, and parts information for the Design D4 control valve.

No person may install, operate, or maintain a Design D4 control valve without first (1) being fully trained and qualified in valve, actuator, and accessory installation, operation, and maintenance, and (2) carefully reading and understanding the contents of this manual. If you have any questions about these instructions, contact your Fisher sales office before proceeding.

Note

Fisher does not assume responsibility for the selection, use, or maintenance of any product. Responsibility for proper selection, use, and maintenance of any Fisher product remains solely with the purchaser and end-user.



W8531/IL

Figure 1. Design D4 Control Valve

Description

The Design D4 control valve is a compact, rugged valve designed primarily for high-pressure throttling applications. This valve is ideal for use on pressure and flow control applications within the oil and gas production industry. The Design D4 valve also makes an excellent dump valve for high-pressure separators and scrubbers.

Specifications

Table 1 lists specifications for the Design D4 control valve. Some of the specifications for a given control valve as it originally comes from the factory are stamped on a nameplate located on the actuator spring barrel.



Table 1. Specifications

| | |
|---|---|
| Available Configurations Spring-to-Close Spring-to-Open Valve Body Sizes and End Connection Styles⁽¹⁾ See table 2 Maximum Inlet Pressures and Temperatures⁽¹⁾ If the valve nameplate shows an ASME pressure-temperature class, maximum inlet pressure and temperature is consistent with the applicable class per ASME B16.34. If the nameplate does not show an ASME class, it will show a maximum cold working pressure at 38°C (100°F) (for example, 248 bar [3600 psi]) Maximum Pressure Drops⁽¹⁾ See tables 3, 4, 5, and 6 Input Signal to Actuator See tables 3, 4, 5, and 6 Actuator Maximum Casing Pressure⁽¹⁾ 3.4 bar (50 psig) Shutoff Classification per ANSI/FCI 70-2 and IEC 60534-4 Class IV | Material Temperature Capabilities⁽¹⁾ Actuator Assembly: –40 to 93°C (–40 to 200°F) Valve Body Assembly: <i>Standard Bonnet O-Ring:</i> –46 to 149°C (–50 to 300°F) <i>Optional Fluoroelastomer Bonnet O-Ring:</i> –23 to 204°C (–10 to 400°F) Flow Characteristic Equal percentage Flow Direction Flow up only Port Diameters See table 2 Valve Plug Travel 19 mm (3/4 inch) Valve Plug Style Micro-Form™ valve plug Actuator Diaphragm Effective Area 452 cm ² (69 inches ²) Actuator Pressure Connection Size 1/4 inch NPT female |
|---|---|

1. The pressure or temperature limits in the referenced tables and any applicable ASME code limitations should not be exceeded.

Table 2. Valve Sizes and Connection Styles

| VALVE SIZE, INCHES | PORT DIAMETER, (INCHES) | SCREWED | RAISED FACE (RF) FLANGED | | | | RING TYPE JOINT (RTJ) FLANGED | |
|--------------------|------------------------------|----------|--------------------------|-----------|-----------|--------------------|-------------------------------|--------------------|
| | | 3600 psi | Class 150 | Class 300 | Class 600 | Class 900 and 1500 | Class 600 | Class 900 and 1500 |
| 1 | 1/4, 3/8, 1/2, 3/4 | X | X | X | X | X | X | X |
| 2 | 1/4, 3/8, 1/2, 3/4, 1, 1-1/4 | X | X | X | X | X | X | X |

X = Available construction.

Instruction Manual

Form 5755

May 2003

D4 Valve

Table 3. Maximum Shutoff Pressure Drops⁽¹⁾ for Design D4 Control Valves (Spring-to-Close)
When Used with Typical Control Instrumentation⁽²⁾

| INPUT SIGNAL TO ACTUATOR | | 0 to 1.2 Bar (0 to 18 Psig) | | 0 to 1.4 Bar (0 to 20 Psig) | | 0 to 2.0 Bar (0 to 30 Psig) | | 0 to 2.3 Bar (0 to 33 Psig) | | 0 to 2.4 Bar (0 to 35 Psig) | | 0 to 3.4 Bar (0 to 50 Psig) | |
|--------------------------|--------|--------------------------------|---------------------|--------------------------------|---------------------|--------------------------------|------|--------------------------------|------|--------------------------------|------|--------------------------------|------|
| SPRING | | Light Rate | | | | Heavy Rate | | | | | | | |
| INITIAL SPRING SETTING | | 0.77 Bar (11.2 Psig) | | 0.77 Bar (11.2 Psig) | | 0.85 Bar (12.4 Psig) | | 1.05 Bar (15.3 Psig) | | 1.18 Bar (17.1 Psig) | | 1.18 Bar (17.1 Psig) | |
| PORT DIAMETER | | Maximum Pressure Drop | | | | | | | | | | | |
| mm | Inches | Bar | Psi | Bar | Psi | Bar | Psi | Bar | Psi | Bar | Psi | Bar | Psi |
| 6.4 | 1/4 | 259 ⁽³⁾ | 3750 ⁽³⁾ | 259 ⁽³⁾ | 3750 ⁽³⁾ | 259 | 3750 | 259 | 3750 | 259 | 3750 | 259 | 3750 |
| 9.5 | 3/8 | 259 ⁽³⁾ | 3750 ⁽³⁾ | 259 ⁽³⁾ | 3750 ⁽³⁾ | 259 | 3750 | 259 | 3750 | 259 | 3750 | 259 | 3750 |
| 12.7 | 1/2 | 191 | 2765 | 191 | 2765 | 219 | 3180 | 259 | 3750 | 259 | 3750 | 259 | 3750 |
| 19.1 | 3/4 | 80 | 1160 | 80 | 1160 | 92 | 1340 | 123 | 1785 | 143 | 2080 | 143 | 2080 |
| 25.4 | 1 | 42 | 610 | 42 | 610 | 49 | 715 | 67 | 965 | 78 | 1130 | 78 | 1130 |
| 31.8 | 1-1/4 | 25 | 365 | 25 | 365 | 30 | 430 | 41 | 590 | 48 | 700 | 48 | 700 |

1. The pressure or temperature limits in the referenced tables and any applicable ASME code limitations should not be exceeded.

2. For example, use the column marked 0-1.4 bar (0-20 psig) for a 0.21-1.0 bar (3-15 psig) pneumatic controller with 1.4 bar (20 psig) supply pressure.

3. For applications with downstream pressure in excess of 196 bar (2845 psig), use 196 bar (2845 psig) for Maximum Shutoff Pressure.

Table 4. Maximum Shutoff Pressure Drops⁽¹⁾ for Design D4 Control Valves (Spring-to-Close)
When Used with Instrumentation with Restricted Output Range⁽²⁾

| INPUT SIGNAL TO ACTUATOR | | 0.2 to 1.0 Bar (3 to 15 Psig) | | 0.4 to 2.0 Bar (6 to 30 Psig) | |
|--------------------------|--------|----------------------------------|---------------------|----------------------------------|---------------------|
| SPRING | | Light Rate | | Heavy Rate | |
| INITIAL SPRING SETTING | | 0.67 Bar (9.7 Psig) | | 0.97 Bar (14.0 Psig) | |
| PORT DIAMETER | | Maximum Pressure Drop | | | |
| mm | Inches | Bar | Psi | Bar | Psi |
| 6.4 | 1/4 | 259 ⁽³⁾ | 3750 ⁽³⁾ | 259 ⁽⁴⁾ | 3750 ⁽⁴⁾ |
| 9.5 | 3/8 | 152 ⁽³⁾ | 2205 ⁽³⁾ | 210 ⁽⁴⁾ | 3045 ⁽⁴⁾ |
| 12.7 | 1/2 | 80 | 1160 | 113 | 1635 |
| 19.1 | 3/4 | 31 | 445 | 45 | 655 |
| 25.4 | 1 | 14 | 210 | 23 | 330 |
| 31.8 | 1-1/4 | 7.6 | 110 | 13 | 185 |

1. The pressure or temperature limits in the referenced tables and any applicable ASME code limitations should not be exceeded.

2. For example, an Electro-Pneumatic Transducer calibrated for 0.21-1.0 bar (3-15 psig) output pressure.

3. For applications with downstream pressure in excess of 85 bar (1240 psig), use 85 bar (1240 psig) for Maximum Shutoff Pressure.

3. For applications with downstream pressure in excess of 118 bar (1715 psig), use 118 bar (1715 psig) for Maximum Shutoff Pressure.

Installation



WARNING

Always wear protective gloves, clothing, and eyewear when performing any installation operations to avoid personal injury.

To avoid personal injury or property damage caused by bursting of pressure-retaining parts or by uncontrolled process fluid, be certain the service conditions do not exceed the limits shown on the valve nameplate and in tables 1, 3, 4, 5, and 6. Use pressure-relieving devices required by government or accepted

industry codes and good engineering practices.

Check with your process or safety engineer for any additional measures that must be taken to protect against process media.

CAUTION

When ordered, the valve configuration and construction materials were selected to meet particular pressure, temperature, pressure drop, and controlled fluid conditions. Responsibility for the safety of process media and compatibility of valve materials with process media rests solely with the purchaser and end-user. Since some body/trim

D4 Valve

Instruction Manual

Form 5755

May 2003

Table 5. Maximum Shutoff Pressure Drops⁽¹⁾ for Design D4 Control Valves (Spring-to-Open)
When Used with Typical Control Instrumentation⁽²⁾

| INPUT SIGNAL TO ACTUATOR | | 0 to 1.2 Bar (0 to 18 Psig) | | 0 to 1.4 Bar (0 to 20 Psig) | | 0 to 2.0 Bar (0 to 30 Psig) | | 0 to 2.3 Bar (0 to 33 Psig) | | 0 to 2.4 Bar (0 to 35 Psig) | | 0 to 3.4 Bar (0 to 50 Psig) | |
|--|--------|--------------------------------|---------------------|--------------------------------|---------------------|--------------------------------|------|--------------------------------|------|--------------------------------|------|--------------------------------|------|
| SPRING | | Light Rate | | | | | | Heavy Rate | | | | | |
| INITIAL SPRING SETTING | | 0.23 Bar (3.4 Psig) | | 0.23 Bar (3.4 Psig) | | 0.28 Bar (4.0 Psig) | | 0.28 Bar (4.0 Psig) | | 0.28 Bar (4.0 Psig) | | 0.28 Bar (4.0 Psig) | |
| PORT DIAMETER | | Maximum Pressure Drop | | | | | | | | | | | |
| mm | Inches | Bar | Psi | Bar | Psi | Bar | Psi | Bar | Psi | Bar | Psi | Bar | Psi |
| 6.4 | 1/4 | 259 ⁽³⁾ | 3750 ⁽³⁾ | 259 ⁽³⁾ | 3750 ⁽³⁾ | 259 | 3750 | 259 | 3750 | 259 | 3750 | 259 | 3750 |
| 9.5 | 3/8 | 259 ⁽³⁾ | 3750 ⁽³⁾ | 259 ⁽³⁾ | 3750 ⁽³⁾ | 259 | 3750 | 259 | 3750 | 259 | 3750 | 259 | 3750 |
| 12.7 | 1/2 | 187 | 2715 | 233 | 3380 | 259 | 3750 | 259 | 3750 | 259 | 3750 | 259 | 3750 |
| 19.1 | 3/4 | 78 | 1135 | 99 | 1430 | 147 | 2130 | 178 | 2575 | 198 | 2875 | 259 | 3750 |
| 25.4 | 1 | 41 | 600 | 53 | 765 | 80 | 1160 | 97 | 1410 | 109 | 1575 | 195 | 2830 |
| 31.8 | 1-1/4 | 24 | 355 | 32 | 465 | 49 | 715 | 60 | 875 | 68 | 985 | 123 | 1785 |
| 1. The pressure or temperature limits in the referenced tables and any applicable ASME code limitations should not be exceeded. 2. For example, use the column marked 0-1.4 bar (0-20 psig) for a 0.21-1.0 bar (3-15 psig) pneumatic controller with 1.4 bar (20 psig) supply pressure. 3. For applications with downstream pressure in excess of 190 bar (2760 psig), use 190 bar (2760 psig) for Maximum Shutoff Pressure. | | | | | | | | | | | | | |

Table 6. Maximum Shutoff Pressure Drops⁽¹⁾ for Design D4 Control Valves (Spring-to-Open)
When Used with Instrumentation with Restricted Output Range⁽²⁾

| INPUT SIGNAL TO ACTUATOR | | 0.2 to 1.0 Bar (3 to 15 Psig) | | 0.4 to 2.0 Bar (6 to 30 Psig) | |
|--------------------------|--------|----------------------------------|---------------------|----------------------------------|---------------------|
| SPRING | | Light Rate | | Heavy Rate | |
| INITIAL SPRING SETTING | | 0.43 Bar (6.2 Psig) | | 0.69 Bar (10.0 Psig) | |
| PORT DIAMETER | | Maximum Pressure Drop | | | |
| mm | Inches | Bar | Psi | Bar | Psi |
| 6.4 | 1/4 | 226 ⁽³⁾ | 3275 ⁽³⁾ | 259 ⁽⁴⁾ | 3750 ⁽⁴⁾ |
| 9.5 | 3/8 | 91 ⁽³⁾ | 1315 ⁽³⁾ | 259 ⁽⁴⁾ | 3750 ⁽⁴⁾ |
| 12.7 | 1/2 | 46 | 660 | 196 | 2845 |
| 19.1 | 3/4 | 15 | 220 | 82 | 1195 |
| 25.4 | 1 | --- | --- | 43 | 630 |
| 31.8 | 1-1/4 | --- | --- | 26 | 380 |

1. The pressure or temperature limits in the referenced tables and any applicable ASME code limitations should not be exceeded.

2. For example, an Electro-Pneumatic Transducer calibrated for 0.21-1.0 bar (3-15 psig) output pressure.

3. For applications with downstream pressure in excess of 51 bar (740 psig), use 51 bar (740 psig) for Maximum Shutoff Pressure.

3. For applications with downstream pressure in excess of 202 bar (2925 psig), use 202 bar (2925 psig) for Maximum Shutoff Pressure.

material combinations are limited in their pressure drop and temperature ranges, do not apply any other conditions to the valve without first contacting your Fisher sales office.

Fisher does not assume final responsibility for the selection, use, or maintenance of any product. Final responsibility for the selection, use, and maintenance of any Fisher product remains with the purchaser and end-user.

- Before installing the control valve assembly, inspect it for any damage and for any foreign material that may have collected in the valve body.
- Remove any pipe scale, welding slag, and other foreign material from the pipeline.

3. The control valve can be installed in any position, but normally the actuator is vertical above the valve. Install the valve so the flow direction arrow on the side of the valve indicates the direction of the process flow.

4. Install the valve following local and national piping codes when they apply to the application. For screwed connections, treat the male pipe threads with a good grade pipe compound. For flanged valves, use suitable gaskets between valve and pipeline flanges.

5. If continuous operation is required during maintenance and inspection, install a conventional three-valve bypass around the valve.

6. Connect loading pressure for the Spring-to-Open configuration to the 1/4-18 NPT connection in the upper casing assembly (key 23) as shown in figure 4. The Spring-to-Close configuration loading pressure

connection is in the lower casing assembly (key 39) as shown in figure 3.

frequency of inspection and maintenance depends on the severity of the service conditions.

Spring Adjustment

The spring has a fixed pressure span over which loading pressure will stroke the valve. Adjustment of the spring compression shifts the span so that more or less loading pressure is required to start travel. Since the span does not change, there will be a corresponding increase or decrease in the pressure requirements at the end of the valve stroke.

In order to maximize shutoff pressure drop values, the actuator spring must be accurately adjusted for each Input Signal Pressure Range. If the actuator has been disassembled or pressure conditions have changed, the spring may require adjustment. Refer to tables 2 and 3 to determine the Initial Spring Set values based on the Input Signal range that is available to the actuator. These values include packing friction.

Spring-to-Close

Refer to figure 3.

1. Loosen the adjusting screw nut (key 44).
2. Turn the adjusting screw (key 31) clockwise to compress the spring or counterclockwise to decrease spring compression.
3. After adjustment, tighten the adjusting screw nut (key 44).

Spring-to-Open

Refer to figure 4.

1. Unscrew the spring case assembly (key 27).
2. Turn the adjusting stem nut (key 44) clockwise to compress the spring or counterclockwise to decrease spring compression.
3. After adjustment, replace the spring case assembly (key 27).

Maintenance

Refer to figure 3.

Valve parts are subject to normal wear and must be inspected and replaced as necessary. The



WARNING

Avoid personal injury from sudden release of process pressure or bursting of parts. Before performing any maintenance operations:

- Always wear protective gloves, clothing, and eyewear when performing any maintenance operations to avoid personal injury.
- Disconnect any operating lines providing air pressure, electric power, or a control signal to the actuator. Be sure the actuator cannot suddenly open or close the valve.
- Use bypass valves or completely shut off the process to isolate the valve from process pressure. Relieve process pressure on both sides of the valve. Drain the process media from both sides of the valve.
- Vent the power actuator loading pressure and relieve any actuator spring precompression.
- Use lock-out procedures to be sure that the above measures stay in effect while you work on the equipment.
- The valve packing box may contain process fluids that are pressurized, *even when the valve has been removed from the pipeline.* Process fluids may spray out under pressure when removing the packing hardware or packing rings.
- Check with your process or safety engineer for any additional measures that must be taken to protect against process media.

Valve Plug and Seat Ring

The Design D4 control valve is designed to allow easy access to the valve plug and seat ring without disturbing the packing. Refer to other sections of this instruction manual if additional maintenance is required.

Disassembly

1. Remove the loading pressure tubing and any accessories that may hamper disassembly.
2. Break the hammer nut (key 6) loose with a hammer. Continue turning the hammer nut by using a hammer or a large adjustable wrench, tightened around one ear of the hammer nut. If the bonnet is stuck on the valve, continue to unscrew the hammer nut. The hammer nut will contact the spring pins (key 7) and will force the bonnet out of the valve. Carefully lift the actuator, bonnet, and valve plug assembly from the valve body.

Note

The spring pins must always be in place during valve operation. They provide a safeguard against injury when the unit is being disassembled.

3. Use a socket wrench to loosen the seat ring (key 3).
4. Remove the seat ring (key 3) and seat ring gasket (key 9) from the valve body.
5. Inspect parts for wear or damage that would prevent proper operation of the valve body. Carefully clean the seat ring gasket surfaces and seat ring threads.

CAUTION

Be careful to avoid damaging the seating surface on the valve plug or seat ring as damage in these areas will allow excessive leakage at shutoff. Avoid damaging the highly polished valve stem surface. A damaged valve stem could cut the packing and allow process fluid to leak to the atmosphere.

6. **For spring-to-close only:** To remove the valve plug (key 2), drive out the groove pin (key 4) and unscrew the valve plug from the stem (key 47).

If the valve plug cannot be easily unscrewed from the stem, use a punch to keep the stem from turning as the plug is removed.

7. **For spring-to-open only:** To remove the valve plug (key 2), first remove the spring case assembly (key 27). Remove the adjustment screw nut (key 44), the upper spring seat (key 29), and the spring (key 30). Push the adjustment stem (key 31) fully downward until the diaphragm plate (key 40)

contacts the cap screws (key 38), exposing the groove pin (key 4) in the plug. Drive out the groove pin (key 4) and unscrew the valve plug from the stem (key 47).

If the valve plug cannot be easily unscrewed from the stem, use a punch to keep the stem from turning as the plug is removed.

Table 7. Torque for Seat Ring (Key 3)

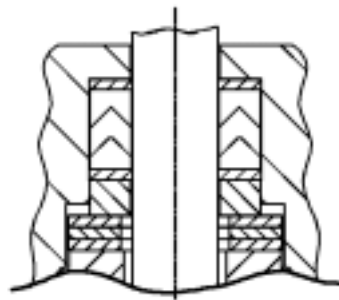
| VALVE SIZE | | RECOMMENDED TORQUE | |
|------------|--------|--------------------|--------|
| mm | Inches | N•m | Lbf•ft |
| 25.4 | 1 | 407 | 300 |
| 50.8 | 2 | 698 | 515 |

Assembly

1. Make sure the bonnet O-ring (key 8) is on the bonnet and lubricated with Lubriplate Mag-1 or equivalent (key 49).
2. Install the plug (key 2) on the stem (key 47) and insert a new groove pin (key 4).
3. Thoroughly clean the seat ring and bonnet threads in the valve body (key 1). Also clean the valve body seat ring gasket surfaces.
4. Apply Never-Seez Nickel Special lubricant or equivalent (key 54) to the threads of the seat ring (key 3), and its mating threads in the valve body.
5. Apply Never-Seez Nickel Special lubricant or equivalent (key 54) to the seat ring gasket (key 9) and install into the valve body.
6. Screw the seat ring into the valve body. Use a socket wrench to tighten the seat ring to the torque values shown in table 7. Remove all excess lubricant after tightening.
7. Lubricate (key 54) the threads on the valve body and hammer nut and the contact surfaces of the bonnet and hammer nut flange. Install the bonnet and actuator assembly with pinned valve plug onto the valve body. Tighten the hammer nut using an adjustable wrench until the nut stops turning. A few hammer blows will be required to ensure that the assembly is tight.
8. See the actuator assembly and spring adjustment sections of this manual.

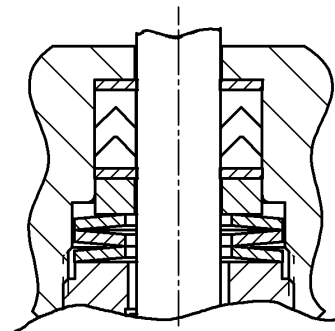
Valve Packing

The valve stem packing can only be accessed from within the valve body. If packing maintenance is required, first disassemble per steps 1, 2, and 6 or 7 in the Valve Plug and Seat Ring Disassembly section of this document.



**BELLEVILLE SPRINGS REASONABLY
TIGHT TO SEAT THE PACKING**

E0862



**BELLEVILLE SPRINGS FINGER TIGHT, THEN
TIGHTEN 5/6 TURN (5 FLATS ON THE RETAINER)**

Figure 2. Design D4 Belleville Spring Procedure

Disassembly

1. Loosen the packing retainer locknut (key 22) with a spanner wrench or with a punch and hammer.
2. Unscrew the packing retainer (key 10) from the bonnet (key 5).
3. Remove the three Belleville springs (key 11), packing spacer (key 14), packing (key 13), and two anti-extrusion rings (key 12) from the bonnet, using a formed wire hook.
4. Clean and inspect the packing box wall to ensure that the packing surfaces are not damaged. If the surface condition is damaged, and cannot be improved by light sanding, replace the bonnet by contacting your Fisher sales office.
5. Inspect the valve stem for scratches or wear, and valve plug for wear or damage. Replace if necessary.

Assembly

Refer to figures 2 and 3.

1. Install new packing and Belleville springs according to the packing arrangement shown in figure 2.
2. Apply a light film of lubricant (key 54) to the threads of the packing retainer (key 10).
3. Install the packing retainer into the bonnet and tighten until the Belleville springs (key 11) are reasonably tight to fully seat the packing and anti-extrusion rings.

4. Completely loosen the packing retainer to relieve all Belleville spring compression.
5. Retighten the packing retainer by hand until the packing retainer firmly contacts the Belleville springs.
6. Tighten the packing retainer clockwise 5/6 turn (5 flats on the retainer).
7. Lock the packing retainer (key 10) solidly in place by tightening the packing retainer locknut (key 22) using a spanner wrench, or a hammer with a punch or chisel.

Actuator (Spring-to-Close)

Refer to figure 3.

Before disassembling the actuator, disassemble the valve plug, seat ring, and packing according to instructions in this manual.

Disassembly

1. Loosen the adjusting screw nut (key 44) and turn the adjusting screw (key 31) counterclockwise to remove all spring compression.
2. Unscrew the casing cap screws and hex nuts (keys 45 and 46), and remove the upper casing assembly (key 23) from the lower casing (key 39).
3. Remove the spring seat (key 29) and actuator spring (key 30).
4. Lift out the diaphragm, diaphragm plate, and stem assembly. Remove the travel indicator (key 32).

D4 Valve

when the bottom of the stem enters the yoke window.

5. To replace the diaphragm (key 15), separate the diaphragm assembly by using a wrench on the hex nuts (key 42) to unscrew the assembly.

6. Separate the parts—diaphragm washer, actuator O-ring (keys 41 and 25), diaphragm, and diaphragm plate, (keys 15 and 40).

7. Inspect the diaphragm and the actuator O-ring for damage or deterioration, and replace if necessary. If the diaphragm is replaced, a new O-ring should also be installed.

8. Inspect the stem O-ring (key 19) and bonnet bushing (key 20); replace if necessary. To inspect the casing O-ring (key 18), remove the cap screws (key 38) and lift off the lower casing (key 39). Replace the O-ring if necessary.

9. If the hammer nut needs to be removed from the bonnet, the spring pins (key 7) can be removed with locking pliers.

Assembly

1. Before starting assembly, make sure all parts are clean and in good condition. There should be no burrs or sharp edges on any threads or surfaces that might cut or damage an O-ring, bushing, the packing, or the diaphragm. When replacing O-rings and bushings, be sure the O-ring or bushing groove is clean and undamaged. Using a general purpose lubricant (key 49), lubricate all bushings and O-rings and the threads of parts that have to pass through the bushings and O-rings.

CAUTION

The threads on factory-produced valve stems have been specially machined to avoid O-ring, bushing, or packing damage during trim maintenance. Use of other than a factory-produced valve stem may result in early stem O-ring, bushing, and packing failure.

Note

Do not lubricate cap screws (key 38) before inserting them in the following procedure.

2. Place the hammer nut and spring pins on the bonnet, if removed. Install the casing O-ring

(key 18), the stem O-ring (key 19), and the bonnet bushing (key 20). Position the lower casing (key 39) on the bonnet. Insert the nonlubricated cap screws (key 38), and torque to 49 N•m (36 lbf•ft).

Note

Spring pins must always be in place during valve operation, acting as a safeguard against injury when the unit is being disassembled.

3. Assemble the diaphragm plate assembly. Place the patterned side of the diaphragm (key 15) against the diaphragm plate (key 40). Be sure to turn the diaphragm washer (key 41) so that the side that is beveled on the inside diameter is against the O-ring (key 25). Also, make sure that it is assembled for installation with the diaphragm on the loading pressure side and the lockwasher (key 43) and lower spring seat (key 28) are on the spring side.

4. Fasten the diaphragm and diaphragm plate assembly on the stem with hex nuts (key 42). Place the diaphragm and diaphragm plate, and stem assembly into the lower casing and bonnet. Install the travel indicator (key 32) on the stem as the bottom of the stem enters the yoke window.

CAUTION

Over-tightening the diaphragm casing cap screws and nuts (keys 45 and 46) can damage the diaphragm. Do not exceed 27 N•m (20 lbf•ft) torque.

5. Replace the spring (key 30) on the diaphragm plate (key 40). Replace the upper spring seat (key 29). Position the upper casing (key 23) on the lower casing (key 39). Insert the cap screws (key 45) and tighten the hex nuts (key 46). Torque the casing cap screws evenly to 27 N•m (20 lbf•ft) using a crisscross pattern.

6. Adjust the initial spring set per the Spring Adjustment section in this manual.

Actuator (Spring-to-Open)

Refer to figure 4.

Before disassembling the actuator, disassemble the valve plug, seat ring, and packing according to instructions in this manual.

Disassembly

1. Unscrew the spring case assembly (key 27). Turn the adjusting screw nut (key 44) counterclockwise to

remove all spring compression. Remove the adjusting screw nut, upper spring seat, and spring (keys 44, 29, and 30).

2. Unscrew the casing cap screws and hex nuts (keys 45 and 46), and remove the upper casing assembly (key 23) from the lower casing (key 39). Remove the cotter pin (key 36) and unscrew the adjusting stem (key 31).
3. Lift out the diaphragm (key 15), diaphragm plate (key 40), and stem assembly. Remove the travel indicator (key 32) when the bottom of the stem enters the yoke window.
4. To replace the diaphragm (key 15), separate the diaphragm assembly by using a wrench on the hex nuts (key 42) to unscrew the assembly.
5. Separate the parts—diaphragm washer, actuator O-ring (keys 41 and 25), diaphragm, and diaphragm plate, (keys 15 and 40).
6. Inspect the diaphragm and the actuator O-ring for damage or deterioration, and replace if necessary. If the diaphragm is replaced, a new O-ring should also be installed.
7. Inspect the stem O-ring (key 19) and bonnet bushing (key 20); replace if necessary. To inspect the casing O-ring (key 18), remove the cap screws (key 38) and lift off the lower casing (key 39). Replace the O-ring if necessary. Inspect the adjusting stem bushing (key 26) and actuator stem O-ring (key 53). Replace if necessary.
8. If the hammer nut needs to be removed from the bonnet, the spring pins (key 7) can be removed with locking pliers.

Assembly

1. Before starting assembly, make sure all parts are clean and in good condition. There should be no burrs or sharp edges on any threads or surfaces that might cut or damage an O-ring, bushing, the packing, or the diaphragm. When replacing O-rings and bushings, be sure the O-ring or bushing groove is clean and undamaged. Using a general purpose lubricant (key 49), lubricate all bushings and O-rings and the threads of parts that have to pass through the bushings and O-rings.

CAUTION

The threads on factory-produced valve stems have been specially machined to avoid O-ring, bushing, or packing

damage during trim maintenance. Use of other than a factory-produced valve stem may result in early stem O-ring, bushing, and packing failure.

Note

Do not lubricate cap screws (key 38) before inserting them in the following procedure.

2. Place the hammer nut and spring pins on the bonnet, if removed. Install the casing O-ring (key 18), the stem O-ring (key 19), and the bonnet bushing (key 20). Position the lower casing (key 39) on the bonnet. Insert the nonlubricated cap screws (key 38), and torque to 49 N•m (36 lbf•ft).
3. Assemble the diaphragm plate assembly. Place the patterned side of the diaphragm (key 15) against the diaphragm plate (key 40). Be sure to turn the diaphragm washer (key 41) so that the side that is beveled on the inside diameter is against the O-ring (key 25). Also, make sure that it is assembled for installation with the diaphragm on the loading pressure side and the lockwasher (key 43) and diaphragm washer (key 41) are on the upper side.

Note

Spring pins must always be in place during valve operation, acting as a safeguard against injury when the unit is being disassembled.

4. Fasten the diaphragm and diaphragm plate assembly on the stem with hex nuts (key 42). Place the diaphragm and diaphragm plate, and stem assembly into the lower casing and bonnet. Install the travel indicator (key 32) on the stem as the bottom of the stem enters the yoke window.
5. Screw the adjusting stem (key 31) onto the stem (key 47) and secure the cotter pin (key 36). Make sure the bushing and O-ring are in place in the upper casing.

CAUTION

Over-tightening the diaphragm casing cap screws and nuts (keys 45 and 46) can damage the diaphragm. Do not exceed 27 N•m (20 lbf•ft) torque.

6. Position the upper casing (key 23) on the lower casing (key 39). Insert the cap screws (key 45) and tighten the hex nuts (key 46). Torque the casing cap

D4 Valve

screws evenly to 27 N•m (20 lbf•ft) using a crisscross pattern.

7. Replace the spring (key 30), spring seat (key 29), and adjusting stem nut (key 44) over the adjusting stem. Replace the spring case assembly (key 27).

8. Adjust the initial spring set per the Spring Adjustment section in this manual.

Parts Ordering

Each Design D4 control valve is assigned a serial number, which can be found on the nameplate. Refer to the number when contacting your Fisher representative for assistance or when ordering replacement parts.

Use only genuine Fisher replacement parts. Components that are not supplied by Fisher should not, under any circumstances, be used in any Fisher valve, because they will void your warranty, might adversely affect the performance of the valve, and might jeopardize worker and workplace safety.

Note

Fisher does not assume responsibility for the selection, use, or maintenance of any product. Responsibility for proper selection, use, and maintenance of any Fisher product remains solely with the purchaser and end-user.

Repair Kits

Note

All repair kits are supplied with hydrogenated nitrile bonnet O-ring. Viton bonnet O-ring must be ordered separately when required.

| | Description | Part Number |
|---|--|-------------|
| * | Packing Repair Kit Includes key numbers 4, 8, 12 (2 req'd), and 13 | RD4X0000012 |
| * | Actuator Repair Kit Includes key numbers 4, 8, 12 (2 req'd), 13, 15, 18, 19, 20, 25, 26, 36, and 53 | RD4X0000022 |

Parts List

| Key | Description | Part Number |
|-----|--------------------------|-------------|
| 1 | Valve Body | |
| 2* | Valve Plug | |
| | S41000 / S41600 HT | |
| | 1-inch valve | |
| | 1/4 inch port diameter | 20C3692X012 |
| | 3/8 inch port diameter | 20C3693X012 |
| | 1/2 inch port diameter | 20C3694X012 |
| | 3/4 inch port diameter | GE01557X012 |
| | 2-inch valve | |
| | 1/4 inch port diameter | GE00992X012 |
| | 3/8 inch port diameter | GE00993X012 |
| | 1/2 inch port diameter | GE00994X012 |
| | 3/4 inch port diameter | GE01558X012 |
| | 1-inch port diameter | GE01561X012 |
| | 1-1/4 inch port diameter | GE01555X012 |
| | S17400 H1150 Dbl | |
| | 1-inch valve | |
| | 1/4 inch port diameter | 20C3692X032 |
| | 3/8 inch port diameter | 20C3693X032 |
| | 1/2 inch port diameter | 20C3694X032 |
| | 3/4 inch port diameter | GE01557X032 |
| | 2-inch valve | |
| | 1/4 inch port diameter | GE00992X032 |
| | 3/8 inch port diameter | GE00993X032 |
| | 1/2 inch port diameter | GE00994X032 |
| | 3/4 inch port diameter | GE01558X032 |
| | 1-inch port diameter | GE01561X032 |
| | 1-1/4 inch port diameter | GE01555X032 |
| | Tungsten Carbide | |
| | 1-inch valve | |
| | 1/4 inch port diameter | 20C3696X012 |
| | 3/8 inch port diameter | 20C3697X012 |
| | 1/2 inch port diameter | 20C3698X012 |
| | 3/4 inch port diameter | 20C3699X012 |

Instruction Manual

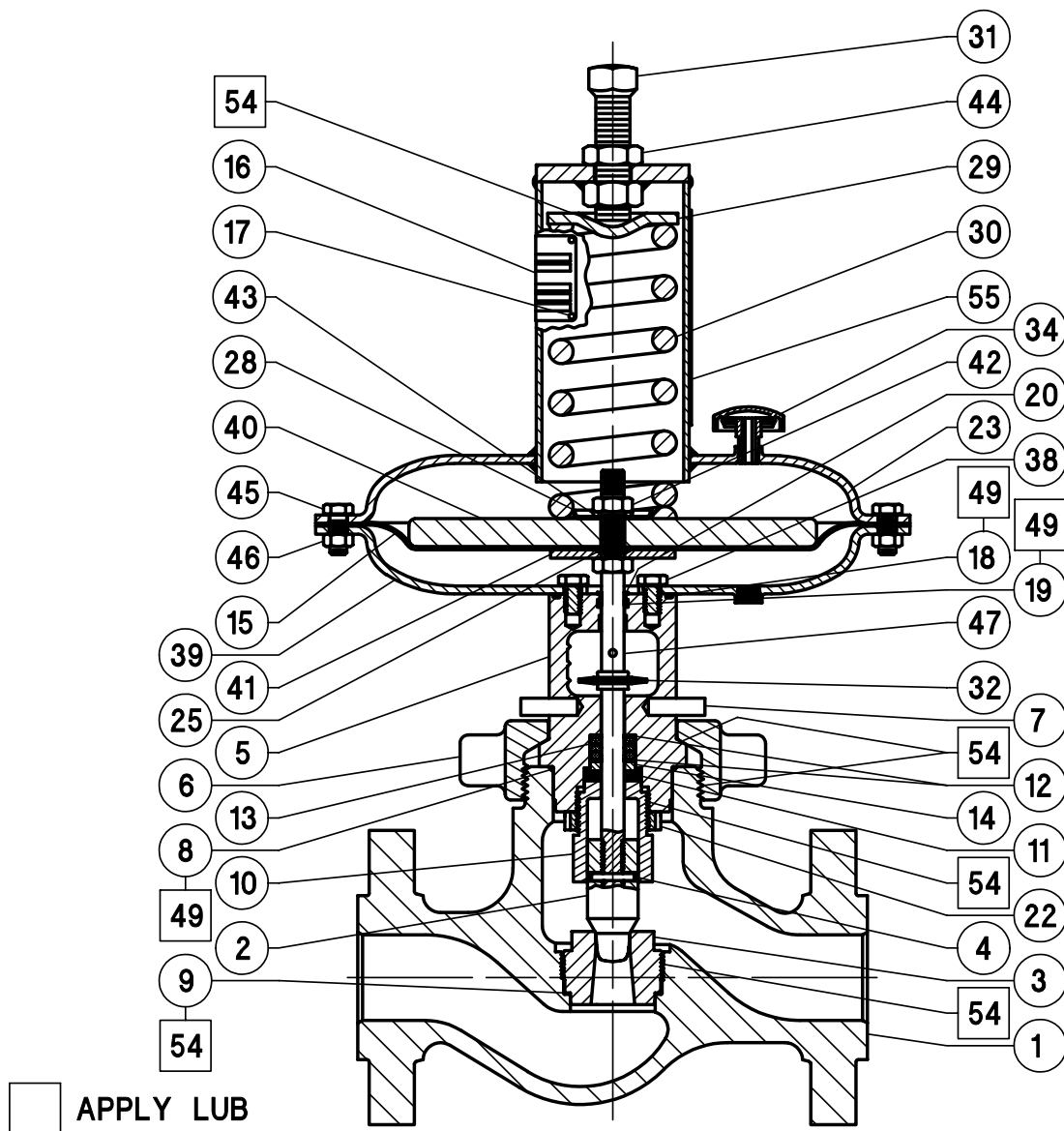
Form 5755

May 2003

D4 Valve

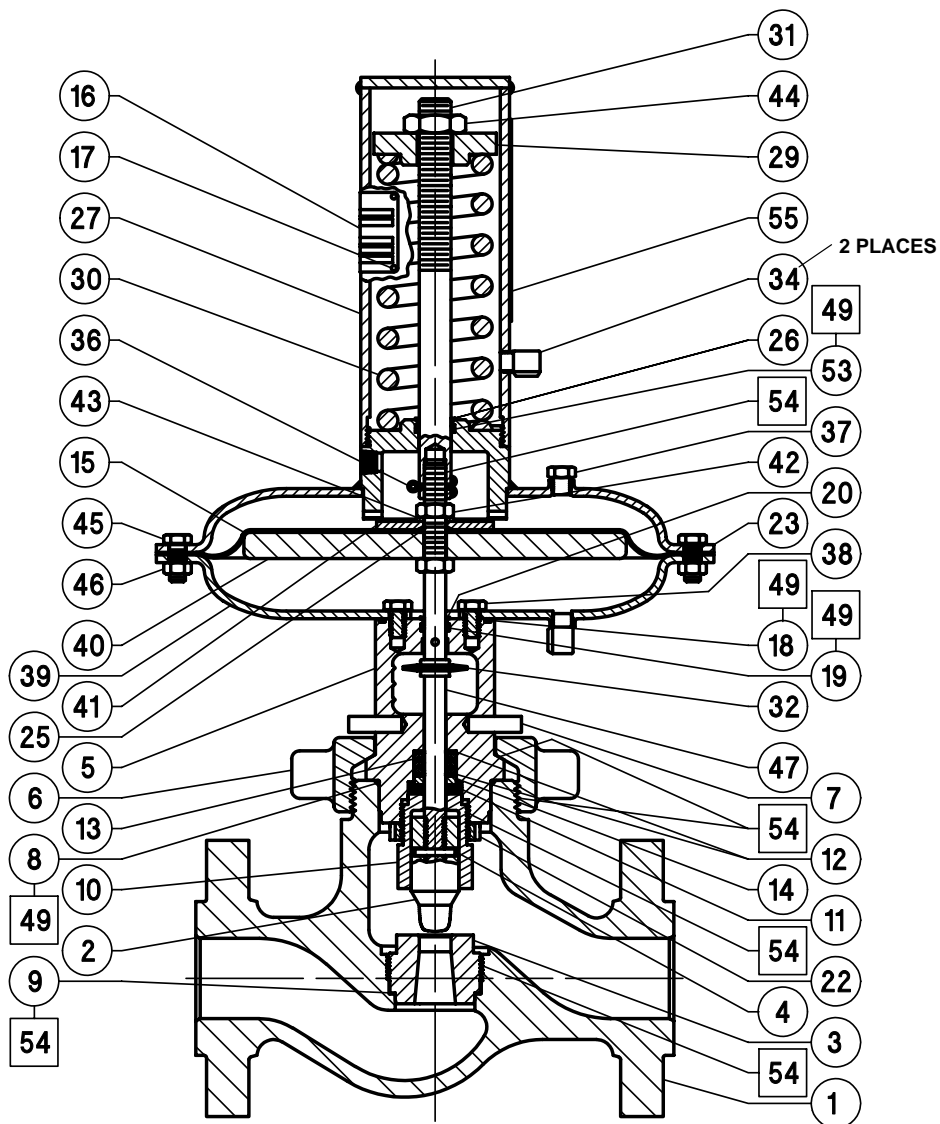
| Key | Description | Part Number | Key | Description | Part Number |
|-----|-----------------------------|-------------|-----|--|-------------|
| 2* | Valve Plug (continued) | | 10 | Packing Retainer | |
| | Tungsten Carbide | | 11 | Belleville Springs | |
| | 2-inch valve | | 12* | Anti-Extrusion Washer, 2 req'd | 12B6335X022 |
| | 1/4 inch port diameter | 20C3682X012 | 13* | Packing Set | 12B6667X012 |
| | 3/8 inch port diameter | 20C3683X012 | 14 | Packing Spacer | |
| | 1/2 inch port diameter | 20C3685X012 | 15* | Diaphragm | 22B3521X012 |
| | 3/4 inch port diameter | 20C3686X012 | 16 | Nameplate | |
| | 1-inch port diameter | 20C3687X012 | 17 | Drive Screw | |
| | 1-1/4 inch port diameter | 20C3688X012 | 18* | Casing O-ring | 1F9141X0142 |
| 3* | Seat Ring | | 19* | Stem O-ring | 1K7561X0072 |
| | S17400 H1150 Dbl | | 20* | Bonnet Bushing | 17A7112X012 |
| | 1-inch valve | | 22 | Locknut | |
| | 1/4 inch port diameter | GE00982X032 | 23 | Upper Casing Assembly | |
| | 3/8 inch port diameter | GE00983X032 | 25* | Actuator O-ring | 1K7561X0072 |
| | 1/2 inch port diameter | GE00984X032 | 26* | Adjusting Stem Bushing (spring-to-open only) | 17A4059X012 |
| | 3/4 inch port diameter | GE00985X032 | 27 | Spring Case Assembly | |
| | 2-inch valve | | 28 | Lower Spring Seat | |
| | 1/4 inch port diameter | GE00986X032 | 29 | Upper Spring Seat | |
| | 3/8 inch port diameter | GE00987X032 | 30 | Spring | |
| | 1/2 inch port diameter | GE00988X032 | | Spring-to-Close | |
| | 3/4 inch port diameter | GE00989X032 | | Light Rate | 1F176827092 |
| | 1-inch port diameter | GE00990X032 | | Heavy Rate | 1E792427082 |
| | 1-1/4 inch port diameter | GE00991X032 | | Spring-to-Open | |
| | Tungsten Carbide | | | Light Rate | 1F176727032 |
| | 1-inch valve | | | Heavy Rate | 1F714327092 |
| | 1/4 inch port diameter | 1J6886X0062 | 31 | Adjustment Screw or Stem | |
| | 3/8 inch port diameter | 1J6887X0042 | 32 | Travel Indicator | |
| | 1/2 inch port diameter | 1J6888X0052 | 34 | Vent Assembly | |
| | 3/4 inch port diameter | 1J6889X0012 | 36* | Cotter Pin (spring-to-open only) | 1C608035022 |
| | 2-inch valve | | 37 | Pipe Plug | |
| | 1/4 inch port diameter | 1J6899X0032 | 38 | Cap Screw | |
| | 3/8 inch port diameter | 1J8154X0052 | 39 | Lower Casing | |
| | 1/2 inch port diameter | 1J8156X0062 | 40 | Diaphragm Plate | |
| | 3/4 inch port diameter | 1J8158X0062 | 41 | Diaphragm Washer | |
| | 1-inch port diameter | 1J8160X0012 | 42 | Hex Nut | |
| | 1-1/4 inch port diameter | 1P7241X0072 | 43 | Lockwasher | |
| 4* | Groove Pin | GE01163X012 | 44 | Adjustment Screw Nut | |
| 5 | Bonnet | | 45 | Cap Screw | |
| 6 | Hammer Nut | | 46 | Hex Nut | |
| 7 | Spring Pin | | 47 | Valve Stem Assembly | |
| 8* | Bonnet O-ring | | 49 | Lubricant (Lubriplate MAG-1 or equivalent) | |
| | Hydrogenated Nitrile | | 50 | NACE Tag (not shown) | |
| | -46 to 149°C (-50 to 300°F) | 10C3680X012 | 51 | Drive Screw | |
| | Viton | | 53* | Actuator Stem O-ring (spring-to-open only) | 1C7821X0182 |
| | -23 to 204°C (-10 to 400°F) | 10C3680X022 | 54 | Lubricant (Never-Seez or equivalent) | |
| 9* | Seat Ring Gasket | | 55 | Spring Setting Label (not shown) | |
| | For 1-inch valve | 1B198636042 | | | |
| | For 2-inch valve | 1B198836042 | | | |

D4 Valve



GE02332-A

Figure 3. Design D4 Valve Assembly (Spring-to-Close)



GE02334A

☐ APPLY LUB

Figure 4. Design D4 Valve Assembly (Spring-to-Open)

Micro-Form and Fisher are marks owned by Fisher Controls International LLC, a business of Emerson Process Management. The Emerson logo is a trademark and service mark of Emerson Electric Co. All other marks are the property of their respective owners.

The contents of this publication are presented for informational purposes only, and while every effort has been made to ensure their accuracy, they are not to be construed as warranties or guarantees, express or implied, regarding the products or services described herein or their use or applicability. We reserve the right to modify or improve the designs or specifications of such products at any time without notice.

Fisher does not assume responsibility for the selection, use or maintenance of any product. Responsibility for proper selection, use and maintenance of any Fisher product remains solely with the purchaser and end-user.

Emerson Process Management

Fisher

Marshalltown, Iowa 50158 USA

Cernay 68700 France

Sao Paulo 05424 Brazil

Singapore 128461

www.Fisher.com

